

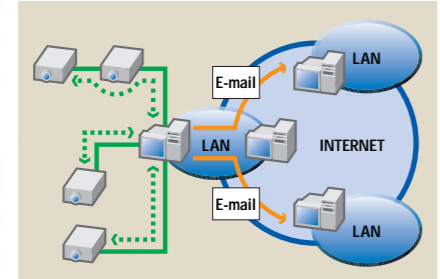
Convenient Control via Networking

Network Connectivity and Remote Access

The XG-V10W/X can be used in a network of up to 250 projectors managed from a single PC with the accompanying Sharp Advanced Presentation Software Professional Edition*, and connected to a PC with an RS-232C, RS-422 or LAN connection. Output terminals enable a daisy chain configuration and eliminate the need for a distributor. The XG-V10W/X can also be managed over a network via an Ethernet connection. The model has an ID No. indicator to set the ID number on each connected unit.

Self-Diagnosis

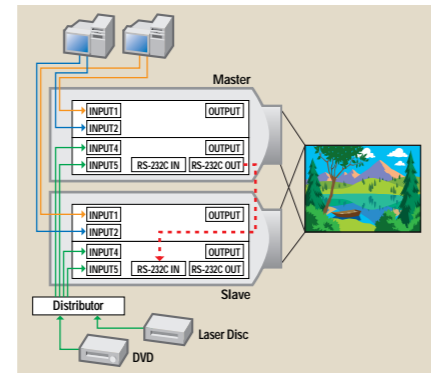
The XG-V10W/X projector includes a self-diagnosis function to constantly check its condition. When trouble occurs, for example, a lamp burns out, the projector sends an error message to the management PC installed with Sharp Advanced Presentation Software Professional Edition, which then automatically relays the projector's message to a registered e-mail address. The software also enables setting the PC to regularly check each projector's condition and sending their reports by email, as well as keeping a record of those reports.



Simple Stacking and Video Wall Stack Projection

For brighter images, two XG-V10W/X projectors, for example, can be stacked in a master/slave configuration, providing 9400 ANSI Lumen (4700 x 2) brightness for the XG-V10W and 8000 ANSI Lumen (4000 x 2)* brightness for the XG-V10X. The Slave is controlled by the Master during projection through an RS-232C connection. A separately-sold RS-232C cable is connected from the RS-232C output on the Master to the RS-232C input on the Slave. Adjusting the settings of each projector is individually controlled, and support functions such as Enlarge, Freeze and Presentation Tools are controlled by the two projectors together at the same time, just as when controlling only one projector.

(* When using optional standard zoom lens AN-LV40EZ)

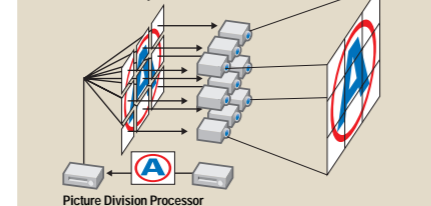


Video Wall

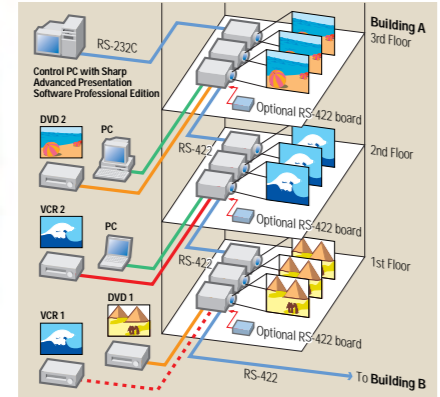
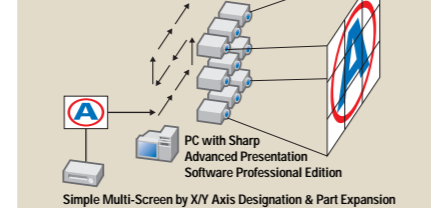
With the accompanying Sharp Advanced Presentation Software Professional Edition, the XG-V10W/X can link with other XG-V10W/X projectors to create a videowall projection, eliminating the need for an image distributor, and allowing easy image settings from a PC when using a single video source. RS-232C outputs enable a master projector linked directly to the PC to form a simple daisy chain connection to multiple slave projectors. The video wall can be set up from 2 x 2 projectors to 8 x 8 projectors.



Traditional & Complicated



Sophisticated but Easy



* Sharp Advanced Presentation Software Professional Edition can be downloaded from the Sharp Global Home Page (<http://www.sharp-world.com/projector/>) for free.

Optional Accessories

Lenses	Boards	Cables	Ceiling Mounts
AN-LV18MX (Fixed wide lens)	AN-S422 (RS-422 board)	AN-C3DV (DVI cable) (3 m)	AN-TK201 (For high ceiling installation)
AN-LV26EZ (Wide-zoom lens)		AN-C3CP (3-RCA to 15-pin D-sub cable) (3 m)	AN-TK202 (For standard ceiling installation)
AN-LV40EZ (Standard zoom lens)	AN-SD1 (Projector SDI board)	AN-C3BN (5-BNC to 15-pin D-sub cable) (3 m)	Installation Adaptor AN-SV1T
AN-LV36EZ (Super zoom lens)		AN-C10RS (RS-232C serial control cable) (10 m)	
AN-LV55EZ (Mid-range zoom lens)	AN-L10T (10 BASE-T board)		
AN-LV80EZ (Tele-zoom lens)			
AN-LV140X (Fixed tele lens)			

* Check other accessories with your local dealers.

Specifications

Model	XG-V10W	XG-V10X
LCD panels	Poly Silicon 1.8" (4.6 cm) active matrix TFT LCD x 3	
Number of pixels	3,932,160 pixels (1,310,720 dots x 3, in stripe pixel arrangement)	2,359,296 pixels (786,432 dots x 3, in stripe pixel arrangement)
Resolution	620 TV lines (video input), 720 TV lines (DTV 720P input, Dot by Dot), 1280 dots x 1024 lines (computer data)	620 TV lines (video input), 650 TV lines (DTV 720P input, Dot by Dot), 1024 dots x 768 lines (computer data)
Computer RGB input signals	LUXGA (in advanced intelligent compression), SXGA, XGA, SVGA, VGA, VESA, Mac 21"/19"/16"/13" 15-126 kHz (horizontal), 43-200 Hz (vertical), 12-230 MHz (pixel clock) (plug & play VESA: DDC 1/2B)	UXGA, SXGA, Mac 21" (in advanced intelligent compression), XGA, SVGA, VGA, VESA, Mac 19"/16"/13" 15-126 kHz (horizontal), 43-200 Hz (vertical), 12-230 MHz (pixel clock) (plug & play VESA: DDC 1/2B)
Video colour systems	NTSC/NTSC 4.43/PAL/PAL (60Hz)/PAL-M/PAL-N/SECAM/DTV (480i/480P/720P/1080i)	
Lens	Choice of seven lenses (Sold separately)	
Projection size	40" (102 cm) to 600" (15.2 m) diagonal	
Projection distance	40" (102 cm) : 1.5 m-2.0 m, 100" (254 cm) : 3.9 m-5.1 m, 600" (15.2 m) : 24.0 m -31.2 m (with standard lens AN-LV40EZ)	
Luminance	4700 ANSI Lumen	4000 ANSI Lumen
Contrast ratio	400:1	
Audio amplifier	3W x 2 (stereo)	
Speakers	5 x 8 cm (round) (x 2)	
Input terminals	Video x 2 (BNC), S-video x 2(BNC), component x 2 (BNC), audio L/R stereo x 2 (15-pin mini D-sub x 1, 5BNC x 1), audio L/R stereo x 2 (RCA) 29-pin analogue-micro cross/digital (DVI) x 1, audio L/R stereo x 1 (RCA), expansion terminal x 1, wired remote control x 1 (3.5 mm mini jack), RS-232C serial port x 1 (9-pin D-sub)	
Output terminals	Video x 1 (BNC), S-video x 1 (BNC), component x 1 (BNC), audio L/R stereo x 1, computer RGB x 1 (15-pin mini D-sub), audio L/R stereo x 1 (RCA), RS-232C serial port x 1, DC12V x 1	
Power source	110-120/220-240V AC, 50/60Hz (Multi-Voltage)	
Power consumption	575W (0.2W standby power with XG-V10W/U/XU, 0.7W standby power with XG-V10WE/XE)	
Power dissipation	< 2100 BTU/hour	
Projection lamp	200W UHP (x 2)	
Dimensions (W x H x D)	444 x 196 x 621 mm (main body only) 448 x 222 x 643 mm (including adjuster legs and projecting parts)	
Weight	18.9 kg (without lens), 23.1 kg (with standard lens AN-LV40EZ)	
Supplied accessories	Remote control, AA size battery (x 2), power cord (1.8m), computer cable (3m), remote mouse receiver and cable for IBM/Mac USB (1m) and IBM PS/2 (1m), extra air filter, terminal cover, CD-ROM, operation manuals	

Design and specifications are current as of March 2001, but are subject to change without prior notice.

SHARP
SHARP CORPORATION OSAKA, JAPAN
URL: <http://www.sharp-world.com/>



Great Large Venue Presentations from Sharp's High Grade Projectors



TRUE SXGA/XGA NETWORK CAPABLE LARGE VENUE LCD PROJECTORS

The XG-V10W/X Highly Equipped Large Venue Models Provide High Level Presentations with Superior Quality Images and Wide-Ranging Features

High Brightness Picture

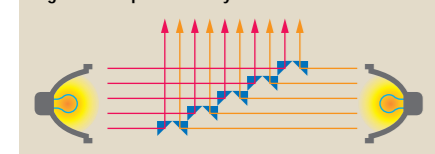
4700 (XG-V10W)/4000 (XG-V10X) ANSI Lumen High Bright Picture

Unique Dual Lamp System

With Sharp's unique optics, two high-grade 200W UHP lamps provide ultra high brightness of 4700 (XG-V10W)/4000 (XG-V10X)* ANSI Lumen with excellent colour uniformity.

(* When using optional standard zoom lens AN-LV40EZ)

Light Axis Separation & Synthesis Prism



4700 ANSI lumen image with two lamps (XG-V10W)



2350 ANSI lumen image with one lamp (XG-V10W)

Single/Dual Lamp Switchover

Choose the lamp arrangement to suit your needs. With dual lamp projection, the XG-V10W/X delivers high luminance pictures in a huge room. Even from a single lamp, the unit produces pictures of superb colour uniformity and sufficient brightness in mid-to-large-size rooms. Single-lamp use also lessens lamp replacement frequency, reducing maintenance costs. Even if one lamp burns out, projection performance can be maintained by using the other lamp without interruption. Plus, for longer life and effective lamp use, the lamp can be switched over automatically each 100 hours.

Maximum Output Light Prism

Sharp's unique technology of Light Axis Separation and Synthesis Prism working together with the dual lamp system to maximize light output, provides efficient brightness and excellent uniformity.

SXGA High-Precision Display

True SXGA/XGA Image Quality

Advanced Compatibility with High-End PCs, Workstations and DTV

Incorporating proprietary Sharp LSI technology, the XG-V10W/X works with powerful PCs and workstations used for specialised applications, such as medical, prepress DTP, CAD and CAM.

- Horizontal Frequency: 15-126 kHz
- Vertical Frequency: 43-200 Hz
- Pixel Clock: 12-230 MHz
- Compatible with Sync. on Green/Composite Sync. signals — Compatible with workstations (SUN, SGI, IBM, HP)
- HDTV/DTV Compatible: 480i/480P/720P/1080i

XG-V10W:

- UXGA (1,600 x 1,200) Compatible in Advanced Intelligent Compression (AICS)
- True SXGA (1,280 x 1,024) and Macintosh 21" (1,280 x 1,024) Compatible
- XGA, SVGA, VGA and Macintosh (19"/16"/13") Compatible in Enhanced Up-Scaling

XG-V10X:

- UXGA (1,600 x 1,200), SXGA (1,280 x 1,024) and Macintosh 21" (1,280 x 1,024) Compatible in Advanced Intelligent Compression (AICS)
- True XGA (1,024 x 768), SVGA, VGA and Macintosh (19"/16"/13") Compatible

Advanced Intelligent Compression (AICS)

Higher resolution pictures can be compressed while keeping high quality to fit into the panel resolution.

Enhanced Up-Scaling

Lower picture resolutions can be up-scaled to the high image quality of projector panels.

3D Digital Uniformity

Three-Dimensional Digital Uniformity compensates uneven picture brightness at all picture brightness levels from white to dark.



Without OCS Panel and without 3D Digital Uniformity



With OCS Panel and with 3D Digital Uniformity

DTV/HDTV and DVD Compatible

The XG-V10W/X provides high-quality images from DVD, HDTV and DTV (480P, 720P, 1080i with 4:3 and 16:9 aspect ratios) by receiving 15k RGB signals and component signals (Y, PB, PR) through five BNC input terminals and an HD 15-pin mini D-sub terminal.



The optional standard zoom lens is attached to the XG-V10W in this photo.

CV-IC Technology

CV-IC (Computers & Video Integrated Composer) Technology

10-bit Digital Gamma Correction Circuitry

10-bit Digital Gamma Correction Circuitry precisely compensates for picture quality and 4-mode gamma selection modulates the gamma value, matching the picture reproduction with the format source and entertainment type, providing brighter pictures and accurately reproducing subtle colour changes.

New Progressive Mode

The Progressive Mode of the previous I/P Conversion still had jagged lines and unclear images. The New Progressive Mode (3D Progressive) with correction circuitry compensates for this interference, to provide a natural and smooth picture in the progressive mode.

Still image viewed in progressive mode



Enhanced Digital Image Enlargement

When you need to compose a video wall or work with an enlarged picture, projecting the larger image sometimes results in unclear or jagged pictures. The Enhanced Digital Image Enlargement employs a much more advanced smoothing technology, producing a crisp and even picture.

Superior 16:9 Image

Conventional projectors extend a picture evenly from the 4:3 original to fit into a 16:9 screen, resulting in pictures stretched horizontally, i.e., wide and short. With the XG-V10W/X, pictures can be projected in a thinner ratio in the middle part and only extended at the sides. This maintains natural and proportional pictures close to the 4:3 original.



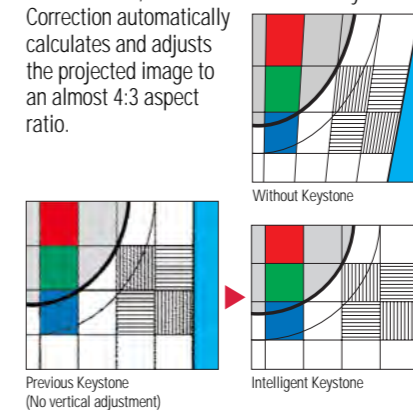
Dynamic Gamma Correction

Dynamic Gamma Correction optimizes gamma correction frame by frame in real time, thus providing a more beautiful image.

Intelligent Digital Keystone Correction (IDWS)

The Intelligent Digital Keystone Correction compensates for picture distortion when images are projected from an angle. Conventionally, only horizontal adjustment can be made. With this new method, the IDWS system provides vertical adjustment. Jagged lines on the picture are eliminated, providing a clear projection of almost the same quality as the original picture. After

adjusting the angle of projection with the Lens Shift function, the XG-V10W/X with Keystone Correction automatically calculates and adjusts the projected image to an almost 4:3 aspect ratio.

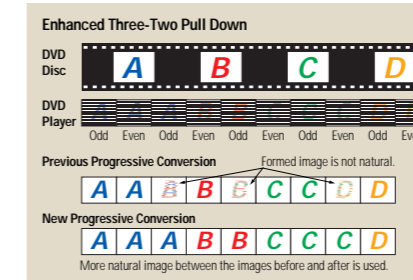


New Intelligent Compression

New Intelligent Compression makes faint, fine lines and letters much clearer and sharper, suitable for project graphics, graph materials and PC menus, with almost perfect legibility.

Enhanced Three-Two Pull Down

Using the Film Mode, the XG-V10W/X can beautifully reproduce movie film recorded in 24Hz progressive format.



Multiple Input and Output Terminals

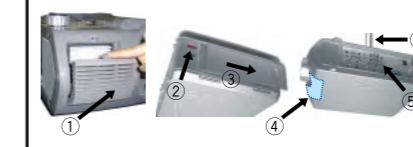
- 6 Inputs and 3 Outputs (including 1 Input and 1 Output Expansion Terminals)
- 1 BNC Terminal for RGB Signals/2 BNC Terminals for Component Signals/Video Signals
- PC Digital Input (DVI)
- Expansion Terminal for Optional Boards



Easy Maintenance for Ceiling Mounting

The XG-V10W/X is designed to make installation and maintenance a breeze — no more worrying about troublesome removal from the ceiling mount:

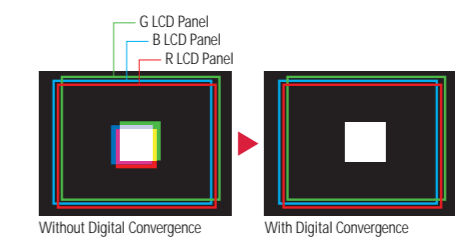
- (1) The air filter is replaced in a single touch.
- (2) The LED ID No. lamp, mounted on the back of the unit, is large enough to be read from a distance.
- (3) Just slide the back cover to replace the lamps — no need to remove from the ceiling mount.
- (4) Even for exchanging the lenses, simply remove the lens cover with a special screw driver supplied as a standard accessory.
- (5) All input/output terminals are mounted on the side of the projector.
- (6) The mounting bracket is the same as the one used for the XG-E3500/XG-XV2, eliminating compatibility hassles.



Other Outstanding Features

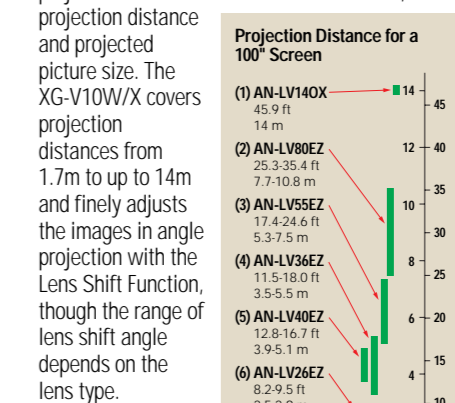
Digital Convergence

With Digital Convergence, a slight distortion of convergence can be easily adjusted on the service menu screen without having to dismantle the projector and to move the LCD panel.



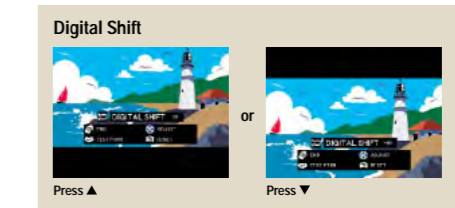
Seven Interchangeable Lenses with Lens Shift Function

The projector may be used with seven optional interchangeable lenses to meet an amazingly wide variety of applications and projection situations. Choose the one which best suits your projection conditions such as the room size,



Digital Shift Function

The presetting of a video or DVD movie to the 16:9 screen ratio may result in a black line at the top or the bottom of the screen. With the Digital Shift function, the entire picture can be moved vertically on the screen in a similar way as the Lens Shift.



Advanced Presentation Features

- Built-In Presentation Tools
- The XG-V10W/X provides a variety of useful presentation support tools to highlight important points and deliver a stronger message.

Picture-In-Picture

The XG-V10W/X can add video images onto a data screen image, providing you with even more effective presentations.



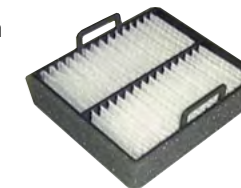
- Digital Enlarge (x 1, x 4, x 9, x 16, x 36, x64)
- Freeze
- Customizable Startup Screen & Background Screen

Low Fan Noise: 39 dB

(in dual lamp mode) In spite of the XG-V10W/X's super high brightness, the projector is astonishingly quiet. The unit produces less fan noise, eliminating annoying sounds during presentations and meetings.

Long-Life Filter

Dust-free and highly durable in design, the newly developed, long life filter is employed to greatly extend filter life as well as filter out dust and dirt of only 3 microns. It extends the conventional 100-hour cleaning function to an amazing 2000 hours. These figures are based on normal operation in regular conference rooms.



Auto Response Adjust (ARA)

Automatically and quickly synchronises in 4 to 8 seconds the projection settings, pixel clock, phase and horizontal and vertical positioning. This ensures a quick and smooth start to presentations.

GUI (Graphical User Interface): Navitron

The easy-to-use Navitron GUI shows how to adjust the focus, sound, lighting, and other settings.

High-Quality Video Circuits (3D Y/C Separation, 3-Line Digital Comb Filter, 3D Noise Reduction, Colour Transient and Y Delay)

Multi System Video Compatibility (NTSC/NTSC4.43/PAL/PAL [60Hz.]/PAL-M/PAL-N/SECAM)

11-Language On-Screen Display (English, German, Spanish, Dutch, French, Italian, Swedish, Portuguese, Chinese, Korean, Japanese)

USB-PS/2 Wireless Remote Control with Mouse Control, Laser Pointer and Backlit Function

- Colour Temperature Adjustment
- Key Lock Function & Password Function
- Power Save Mode when on Standby